

This plan must be used with the attached 'Symbols' document.

Date Requested: 06/06/2023
Job Reference: 29723583
Site Location: 561893 196236
Requested by:
Mrs Michelle Hawkett
Your Scheme/Reference:
332410839/100.004 - Shenfield East
Scale: 1:3588 (When plotted at A3)

1. The position of the apparatus shown on this drawing is believed to be correct but the original landmarks may have been altered since the apparatus was installed.
2. The exact position of the apparatus should be verified - use approved cable avoidance tools prior to excavation using suitable hand tools.
3. It is essential that trial holes are carefully made avoiding the use of mechanical tools or picks until the exact location of all the cables have been determined.
4. It must be assumed that there is a service cable into each property, lamp column and street sign, etc.
5. All cables must be treated as being live unless proved otherwise by UK Power Networks.
6. The information proved must be given to all people working near UK Power Networks plant and equipment. Do not use plans more than 3 months after the issue date for excavation purposes.
7. Please be aware that electric cables/lines belonging to other owners of licensed electricity distribution systems may be present and it is your responsibility to identify their location.

Dig Sites Area: Line:

The quality and accuracy of any print will depend on your printer, your computer and its print settings. Measurements scaled from this plan may not match measurements between the same points on the ground.

1. UK Power Networks does not warrant that the information provided to you is correct. You rely upon it at your own risk.
2. UK Power Networks does not exclude or limit its liability if it causes the death of any persons or causes personal injury to a person.
3. Subject to paragraph 2 UK Power Networks has no liability to you in contract, in tort (including negligence), for breach of statutory duty or otherwise for any loss, damage, cost, claims, demands, or expenses that you or any third party may suffer or incur as a result of using the information provided whether for physical damage to property or for any economic loss (including without limitation loss of profit, loss of opportunity, loss of savings, loss of goodwill, loss of business, loss of use) or any special or consequential loss or damage whatsoever.
4. This plan has been provided to you on the basis of the terms of use set out in the covering letter that accompanies this plan. If you do not accept and/or do not understand the terms of use set out in the covering letter you must not use the plan and must return it to the sender of the letter.
5. You are responsible for the security of the information provided to you. It must not be given, sold or made available upon payment of a fee to a third party.

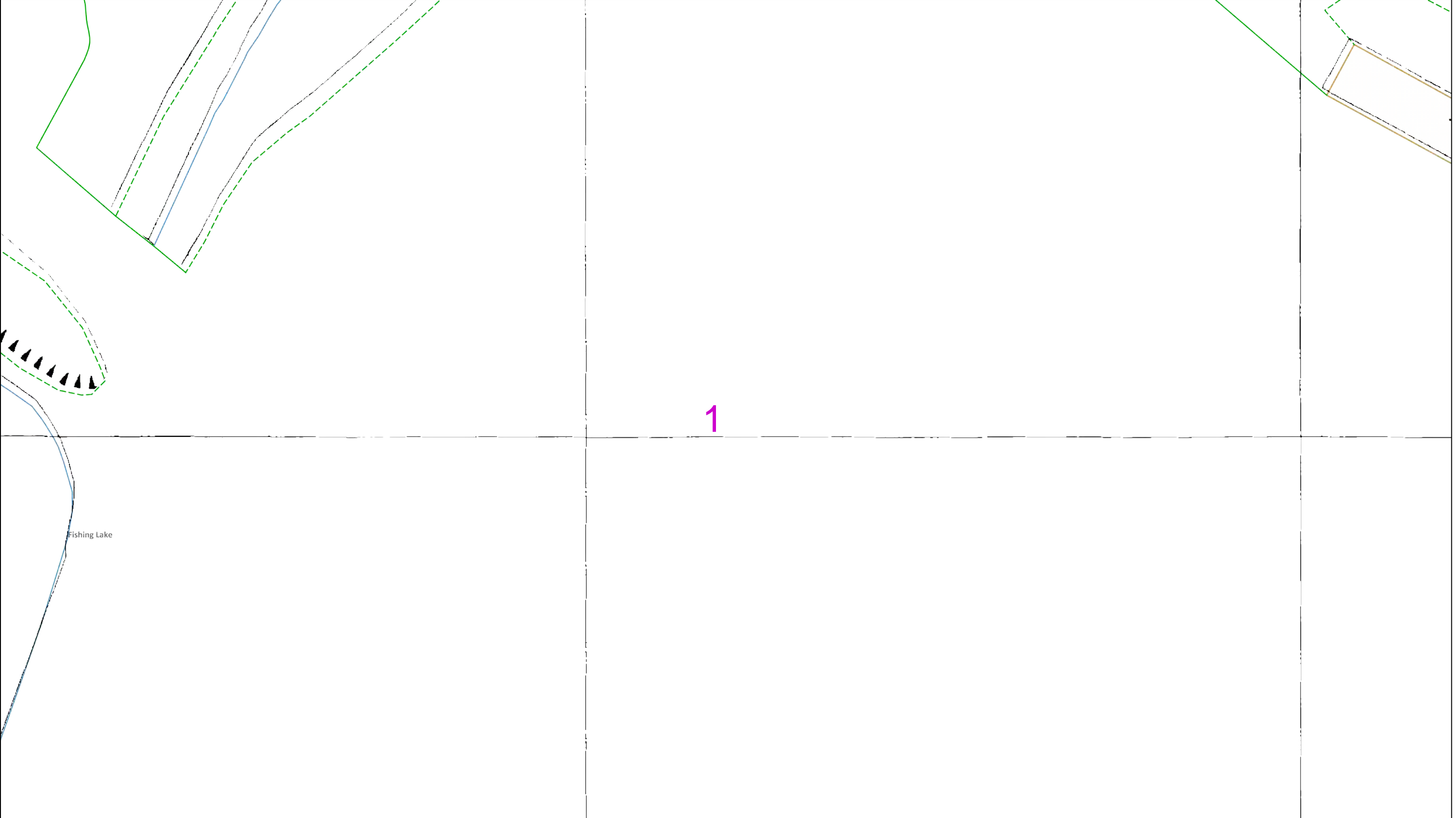
IF IN DOUBT - ASK!
PHONE 0800 056 5866
EMERGENCY - If you damage a cable or line
Phone 0800 783 8838 (24hrs) URGENTLY

ALWAYS LOOK UP BEFORE YOU START WORK
Refer to HSE Guidance note GS6

Maps produced at 1:2500 scale are Geo-Schematics which show LV mains cables and overhead lines (in some cases all voltages). Prior to carrying out excavations you must refer to the 1:500 records to determine the location of all known underground plant and equipment.

Reproduced by permission of Ordnance Survey on behalf of HMSO. © Crown copyright and database rights 2023. All rights reserved. Ordnance Survey Licence numbers 100019626, 100019826 and 100019450. Data has been added to the Ordnance Survey base map; all proprietary rights in such additional data are and shall remain the exclusive property of © London Power Networks plc or Eastern Power Networks plc or South Eastern Power Networks plc each being a distribution licensee under section 6(1)(c) of the Electricity Act 1989 for the relevant distribution services area as that term is defined in such licensee's distribution licence. All rights in such data reserved.

Plans generated by DigSAFE Pro™ software provided by LinesearchbeforeUdig.



02550metres

Dig SitesArea: Line:

The quality and accuracy of any print will depend on your printer, your computer and its print settings. Measurements scaled from this plan may not match measurements between the same points on the ground.

This plan must be used with the attached ‘Symbols’ document.

Date Requested: 06/06/2023

Job Reference: 29723583

Site Location: 561893 196236

Requested by: Mrs Michelle Hawket

Your Scheme/Reference: 332410839/100.004 - Shenfield East

Scale: 1:500 (When plotted at A3)

1. The position of the apparatus shown on this drawing is believed to be correct but the original landmarks may have been altered since the apparatus was installed.

2. The exact position of the apparatus should be verified - use approved cable avoidance tools prior to excavation using suitable hand tools.

3. It is essential that trial holes are carefully made avoiding the use of mechanical tools or picks until the exact location of all the cables have been determined.

4. It must be assumed that there is a service cable into each property, lamp column and street sign, etc.

5. All cables must be treated as being live unless proved otherwise by UK Power Networks.

6. The information proved must be given to all people working near UK Power Networks plant and equipment. Do not use plans more than 3 months after the issue date for excavation purposes.

7. Please be aware that electric cables/lines belonging to other owners of licensed electricity distribution systems may be present and it is your responsibility to identify their location.

1. UK Power Networks does not warrant that the information provided to you is correct. You rely upon it at your own risk.

2. UK Power Networks does not exclude or limit its liability if it causes the death of any persons or causes personal injury to a person.

3. Subject to paragraph 2 UK Power Networks has no liability to you in contract, in tort (including negligence), for breach of statutory duty or otherwise for any loss, damage, cost, claims, demands, or expenses that you or any third party may suffer or incur as a result of using the information provided whether for physical damage to property or for any economic loss (including without limitation loss of profit, loss of opportunity, loss of savings, loss of goodwill, loss of business, loss of use) or any special or consequential loss or damage whatsoever.

4. This plan has been provided to you on the basis of the terms of use set out in the covering letter that accompanies this plan. If you do not accept and/or do not understand the terms of use set out in the covering letter you must not use the plan and must return it to the sender of the letter.

5. You are responsible for the security of the information provided to you. It must not be given, sold or made available upon payment of a fee to a third party.

IF IN DOUBT - ASK!

PHONE 0800 056 5866

EMERGENCY - If you damage a cable or line

Phone 0800 783 8838

(24hrs) URGENTLY

ALWAYS LOOK UP BEFORE YOU START WORK

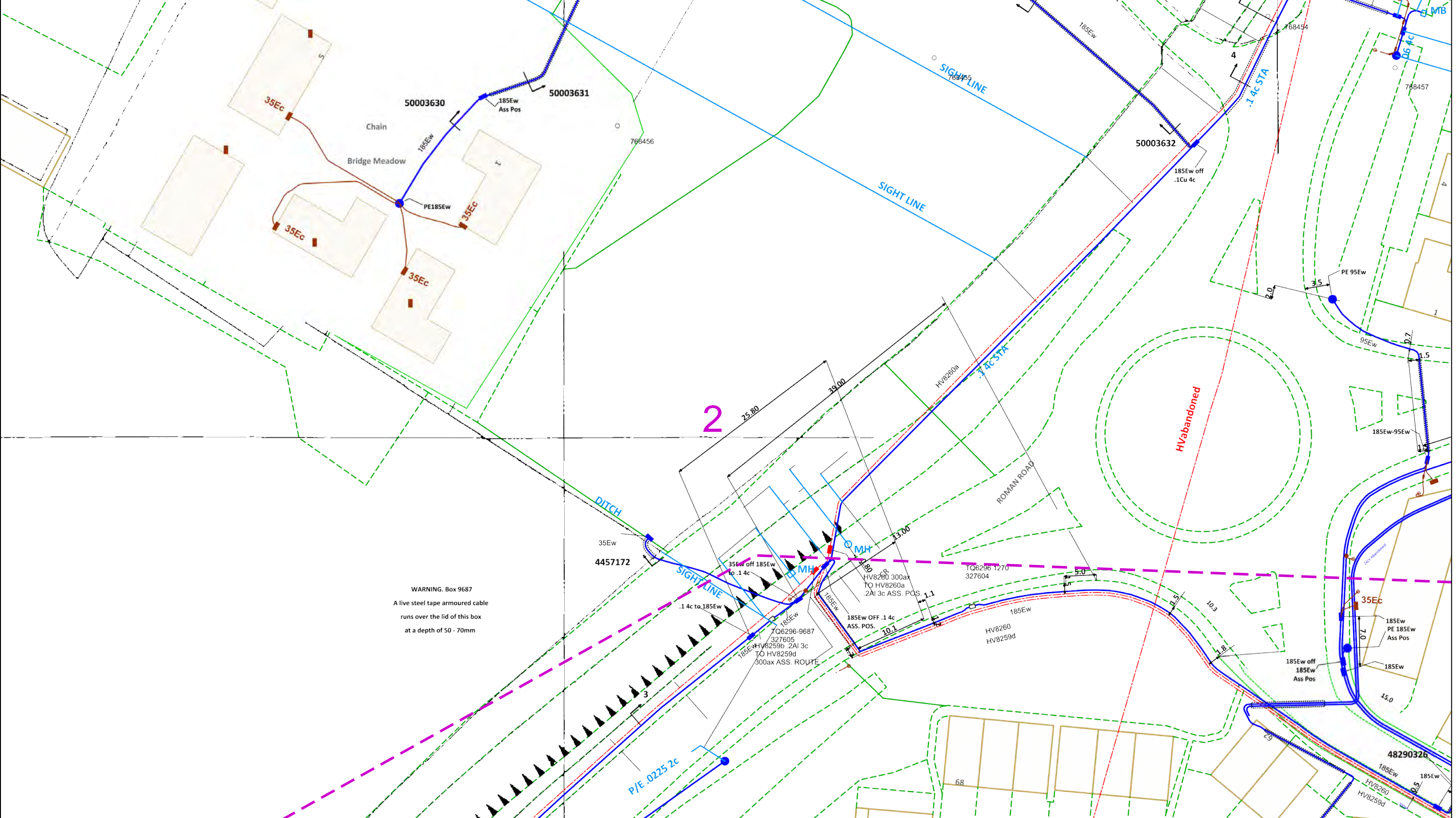
Refer to HSE

Guidance note GS6

Maps produced at 1:2500 scale are Geo-Schematics which show LV mains cables and overhead lines (in some cases all voltages). Prior to carrying out excavations you must refer to the 1:500 records to determine the location of all known underground plant and equipment.

Reproduced by permission of Ordnance Survey on behalf of HMSO. © Crown copyright and database rights 2023. All rights reserved. Ordnance Survey Licence numbers 100019626, 100019826 and 100019450. Data has been added to the Ordnance Survey base map; all proprietary rights in such additional data are and shall remain the exclusive property of © London Power Networks plc or Eastern Power Networks plc or South Eastern Power Networks plc each being a distribution licensee under section 6(1)(c) of the Electricity Act 1989 for the relevant distribution services area as that term is defined in such licensee’s distribution licence. All rights in such data reserved.

Plans generated by DigSAFE Pro™ software provided by LinesearchbeforeUdig.



02550metres

This plan must be used with the attached ‘Symbols’ document.

Date Requested: 06/06/2023

Job Reference: 29723583

Site Location: 561893 196236

Requested by: Mrs Michelle Hawkett

Your Scheme/Reference: 332410839/100.004 - Shenfield East

Scale: 1:500 (When plotted at A3)

1. The position of the apparatus shown on this drawing is believed to be correct but the original landmarks may have been altered since the apparatus was installed.

2. The exact position of the apparatus should be verified - use approved cable avoidance tools prior to excavation using suitable hand tools.

3. It is essential that trial holes are carefully made avoiding the use of mechanical tools or picks until the exact location of all the cables have been determined.

4. It must be assumed that there is a service cable into each property, lamp column and street sign, etc.

5. All cables must be treated as being live unless proved otherwise by UK Power Networks.

6. The information proved must be given to all people working near UK Power Networks plant and equipment. Do not use plans more than 3 months after the issue date for excavation purposes.

7. Please be aware that electric cables/lines belonging to other owners of licensed electricity distribution systems may be present and it is your responsibility to identify their location.

Dig Sites

Area:

Line:

The quality and accuracy of any print will depend on your printer, your computer and its print settings. Measurements scaled from this plan may not match measurements between the same points on the ground.

1. UK Power Networks does not warrant that the information provided to you is correct. You rely upon it at your own risk.

2. UK Power Networks does not exclude or limit its liability if it causes the death of any persons or causes personal injury to a person.

3. Subject to paragraph 2 UK Power Networks has no liability to you in contract, in tort (including negligence), for breach of statutory duty or otherwise for any loss, damage, cost, claims, demands, or expenses that you or any third party may suffer or incur as a result of using the information provided whether for physical damage to property or for any economic loss (including without limitation loss of profit, loss of opportunity, loss of savings, loss of goodwill, loss of business, loss of use) or any special or consequential loss or damage whatsoever.

4. This plan has been provided to you on the basis of the terms of use set out in the covering letter that accompanies this plan. If you do not accept and/or do not understand the terms of use set out in the covering letter you must not use the plan and must return it to the sender of the letter.

5. You are responsible for the security of the information provided to you. It must not be given, sold or made available upon payment of a fee to a third party.

UK Power Networks

IF IN DOUBT - ASK! PHONE 0800 056 5866

EMERGENCY - If you damage a cable or line Phone 0800 783 8838 (24hrs) URGENTLY

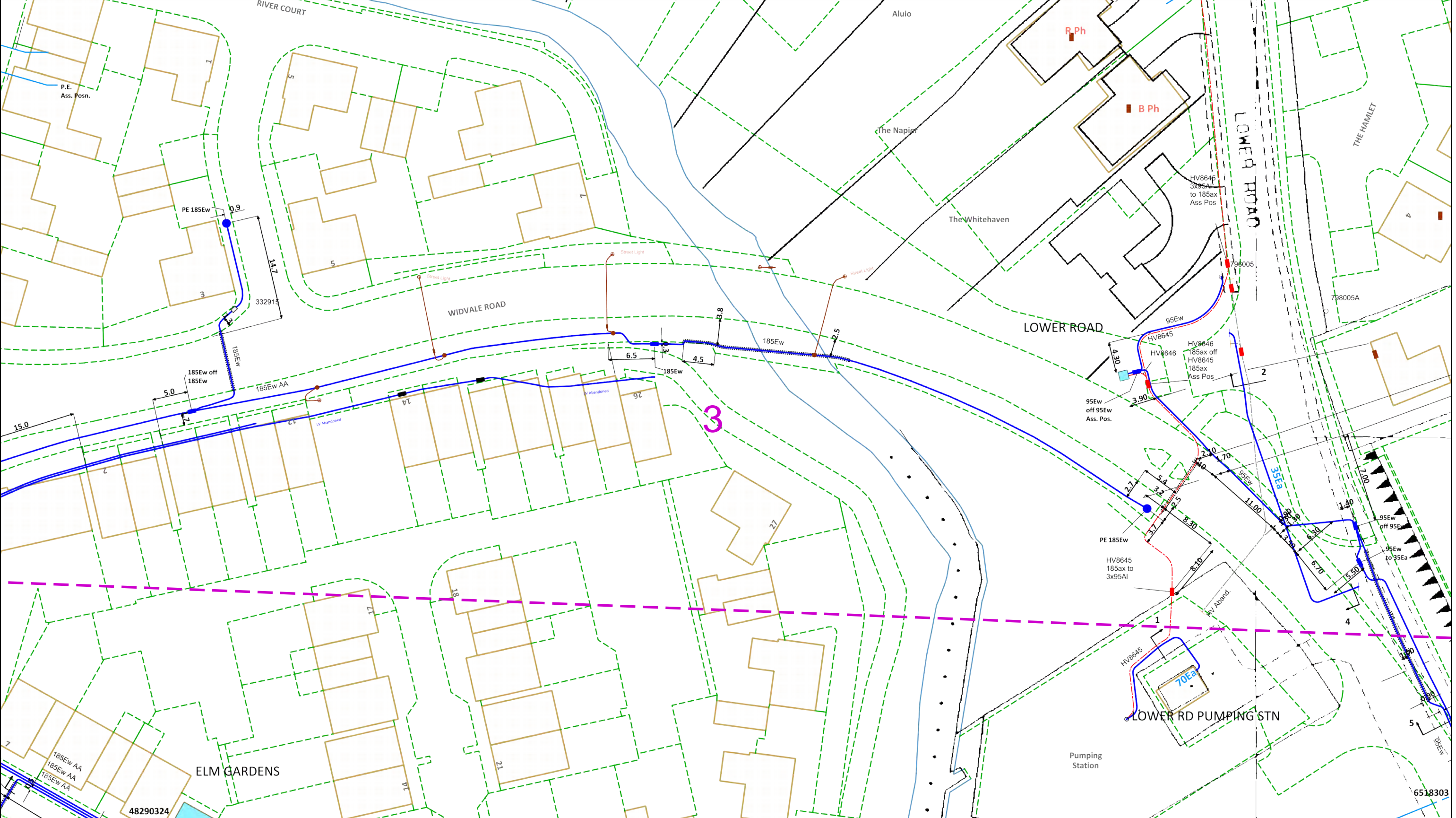
ALWAYS LOOK UP BEFORE YOU START WORK

Refer to HSE Guidance note GS6

Maps produced at 1:2500 scale are Geo-Schematics which show LV mains cables and overhead lines (in some cases all voltages). Prior to carrying out excavations you must refer to the 1:500 records to determine the location of all known underground plant and equipment.

Reproduced by permission of Ordnance Survey on behalf of HMSO. © Crown copyright and database rights 2023. All rights reserved. Ordnance Survey Licence numbers 100019626, 100019826 and 100019450. Data has been added to the Ordnance Survey base map; all proprietary rights in such additional data are and shall remain the exclusive property of © London Power Networks plc or Eastern Power Networks plc or South Eastern Power Networks plc each being a distribution licensee under section 6(1)(c) of the Electricity Act 1989 for the relevant distribution services area as that term is defined in such licensee’s distribution licence. All rights in such data reserved.

Plans generated by DigSAFE Pro™ software provided by LinesearchbeforeUdig.



0 25 50

metres

Dig Sites Area: Line:

The quality and accuracy of any print will depend on your printer, your computer and its print settings. Measurements scaled from this plan may not match measurements between the same points on the ground.

UK Power Networks

IF IN DOUBT - ASK!
PHONE 0800 056 5866
EMERGENCY - If you damage a cable or line
Phone 0800 783 8838 (24hrs) URGENTLY

ALWAYS LOOK UP BEFORE YOU START WORK
Refer to HSE Guidance note GS6

Maps produced at 1:2500 scale are Geo-Schematics which show LV mains cables and overhead lines (in some cases all voltages). Prior to carrying out excavations you must refer to the 1:500 records to determine the location of all known underground plant and equipment.

This plan must be used with the attached 'Symbols' document.

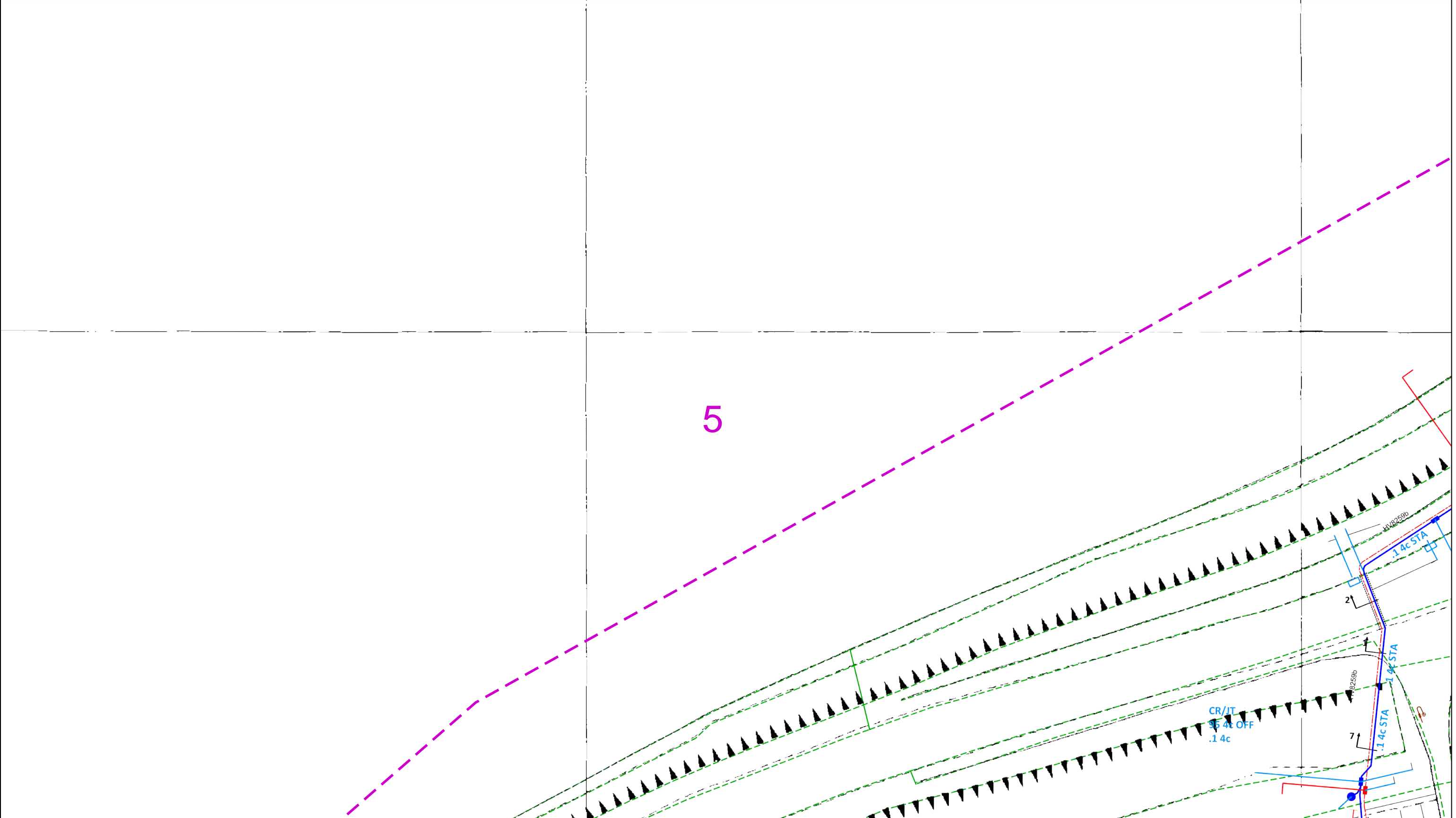
Date Requested: 06/06/2023
Job Reference: 29723583
Site Location: 561893 196236
Requested by: Mrs Michelle Hawket
Your Scheme/Reference: 332410839/100.004 - Shenfield East
Scale: 1:500 (When plotted at A3)

1. The position of the apparatus shown on this drawing is believed to be correct but the original landmarks may have been altered since the apparatus was installed.
2. The exact position of the apparatus should be verified - use approved cable avoidance tools prior to excavation using suitable hand tools.
3. It is essential that trial holes are carefully made avoiding the use of mechanical tools or picks until the exact location of all the cables have been determined.
4. It must be assumed that there is a service cable into each property, lamp column and street sign, etc.
5. All cables must be treated as being live unless proved otherwise by UK Power Networks.
6. The information proved must be given to all people working near UK Power Networks plant and equipment. Do not use plans more than 3 months after the issue date for excavation purposes.
7. Please be aware that electric cables/lines belonging to other owners of licensed electricity distribution systems may be present and it is your responsibility to identify their location.

1. UK Power Networks does not warrant that the information provided to you is correct. You rely upon it at your own risk.
2. UK Power Networks does not exclude or limit its liability if it causes the death of any persons or causes personal injury to a person.
3. Subject to paragraph 2 UK Power Networks has no liability to you in contract, in tort (including negligence), for breach of statutory duty or otherwise for any loss, damage, cost, claims, demands, or expenses that you or any third party may suffer or incur as a result of using the information provided whether for physical damage to property or for any economic loss (including without limitation loss of profit, loss of opportunity, loss of savings, loss of goodwill, loss of business, loss of use) or any special or consequential loss or damage whatsoever.
4. This plan has been provided to you on the basis of the terms of use set out in the covering letter that accompanies this plan. If you do not accept and/or do not understand the terms of use set out in the covering letter you must not use the plan and must return it to the sender of the letter.
5. You are responsible for the security of the information provided to you. It must not be given, sold or made available upon payment of a fee to a third party.

Reproduced by permission of Ordnance Survey on behalf of HMSO. © Crown copyright and database rights 2023. All rights reserved. Ordnance Survey Licence numbers 100019626, 100019826 and 100019450. Data has been added to the Ordnance Survey base map; all proprietary rights in such additional data are and shall remain the exclusive property of © London Power Networks plc or Eastern Power Networks plc or South Eastern Power Networks plc each being a distribution licensee under section 6(1)(c) of the Electricity Act 1989 for the relevant distribution services area as that term is defined in such licensee's distribution licence. All rights in such data reserved.

Plans generated by DigSAFE Pro™ software provided by LinesearchbeforeUdig.



02550metres

Dig SitesArea: [dashed magenta line] Line: [dashed green line]

This plan must be used with the attached ‘Symbols’ document.

Date Requested: 06/06/2023
Job Reference: 29723583
Site Location: 561893 196236
Requested by: Mrs Michelle Hawket
Your Scheme/Reference: 332410839/100.004 - Shenfield East
Scale: 1:500 (When plotted at A3)

1. The position of the apparatus shown on this drawing is believed to be correct but the original landmarks may have been altered since the apparatus was installed.

2. The exact position of the apparatus should be verified - use approved cable avoidance tools prior to excavation using suitable hand tools.

3. It is essential that trial holes are carefully made avoiding the use of mechanical tools or picks until the exact location of all the cables have been determined.

4. It must be assumed that there is a service cable into each property, lamp column and street sign, etc.

5. All cables must be treated as being live unless proved otherwise by UK Power Networks.

6. The information proved must be given to all people working near UK Power Networks plant and equipment. Do not use plans more than 3 months after the issue date for excavation purposes.

7. Please be aware that electric cables/lines belonging to other owners of licensed electricity distribution systems may be present and it is your responsibility to identify their location.

1. UK Power Networks does not warrant that the information provided to you is correct. You rely upon it at your own risk.

2. UK Power Networks does not exclude or limit its liability if it causes the death of any persons or causes personal injury to a person.

3. Subject to paragraph 2 UK Power Networks has no liability to you in contract, in tort (including negligence), for breach of statutory duty or otherwise for any loss, damage, cost, claims, demands, or expenses that you or any third party may suffer or incur as a result of using the information provided whether for physical damage to property or for any economic loss (including without limitation loss of profit, loss of opportunity, loss of savings, loss of goodwill, loss of business, loss of use) or any special or consequential loss or damage whatsoever.

4. This plan has been provided to you on the basis of the terms of use set out in the covering letter that accompanies this plan. If you do not accept and/or do not understand the terms of use set out in the covering letter you must not use the plan and must return it to the sender of the letter.

5. You are responsible for the security of the information provided to you. It must not be given, sold or made available upon payment of a fee to a third party.

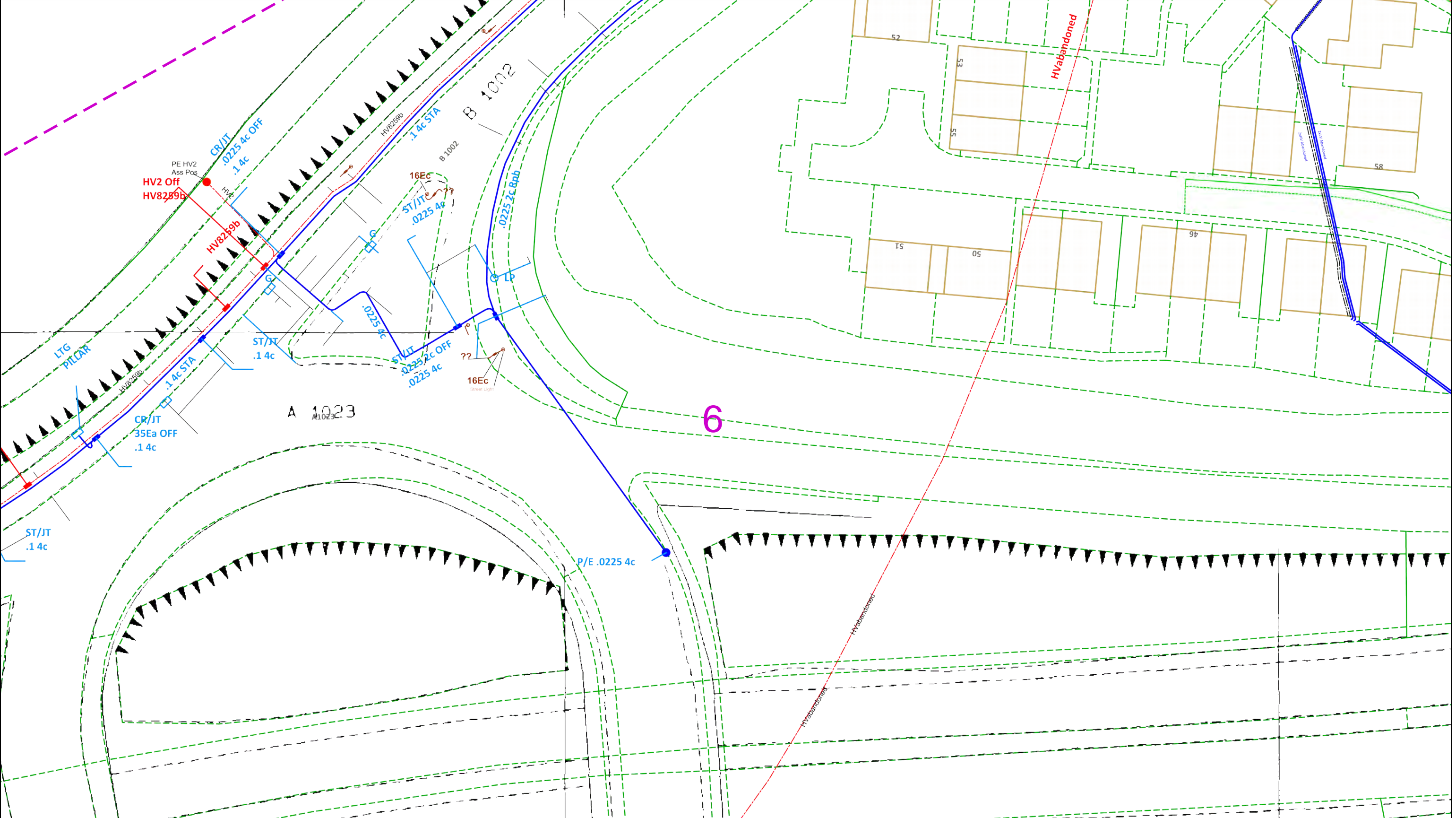
UK Power Networks

IF IN DOUBT - ASK!
PHONE 0800 056 5866
EMERGENCY - If you damage a cable or line
Phone 0800 783 8838 (24hrs) URGENTLY

ALWAYS LOOK UP BEFORE YOU START WORK
Refer to HSE Guidance note GS6

Maps produced at 1:2500 scale are Geo-Schematics which show LV mains cables and overhead lines (in some cases all voltages). Prior to carrying out excavations you must refer to the 1:500 records to determine the location of all known underground plant and equipment.

Reproduced by permission of Ordnance Survey on behalf of HMSO. © Crown copyright and database rights 2023. All rights reserved. Ordnance Survey Licence numbers 100019626, 100019826 and 100019450. Data has been added to the Ordnance Survey base map; all proprietary rights in such additional data are and shall remain the exclusive property of © London Power Networks plc or Eastern Power Networks plc or South Eastern Power Networks plc each being a distribution licensee under section 6(1)(c) of the Electricity Act 1989 for the relevant distribution services area as that term is defined in such licensee’s distribution licence. All rights in such data reserved.
Plans generated by DigSAFE Pro™ software provided by LinesearchbeforeUdig.



02550metres

Dig SitesArea: Line:

The quality and accuracy of any print will depend on your printer, your computer and its print settings. Measurements scaled from this plan may not match measurements between the same points on the ground.

This plan must be used with the attached 'Symbols' document.

Date Requested: 06/06/2023

Job Reference: 29723583

Site Location: 561893 196236

Requested by: Mrs Michelle Hawkett

Your Scheme/Reference: 332410839/100.004 - Shenfield East

Scale: 1:500 (When plotted at A3)

1. The position of the apparatus shown on this drawing is believed to be correct but the original landmarks may have been altered since the apparatus was installed.

2. The exact position of the apparatus should be verified - use approved cable avoidance tools prior to excavation using suitable hand tools.

3. It is essential that trial holes are carefully made avoiding the use of mechanical tools or picks until the exact location of all the cables have been determined.

4. It must be assumed that there is a service cable into each property, lamp column and street sign, etc.

5. All cables must be treated as being live unless proved otherwise by UK Power Networks.

6. The information proved must be given to all people working near UK Power Networks plant and equipment. Do not use plans more than 3 months after the issue date for excavation purposes.

7. Please be aware that electric cables/lines belonging to other owners of licensed electricity distribution systems may be present and it is your responsibility to identify their location.

1. UK Power Networks does not warrant that the information provided to you is correct. You rely upon it at your own risk.

2. UK Power Networks does not exclude or limit its liability if it causes the death of any persons or causes personal injury to a person.

3. Subject to paragraph 2 UK Power Networks has no liability to you in contract, in tort (including negligence), for breach of statutory duty or otherwise for any loss, damage, cost, claims, demands, or expenses that you or any third party may suffer or incur as a result of using the information provided whether for physical damage to property or for any economic loss (including without limitation loss of profit, loss of opportunity, loss of savings, loss of goodwill, loss of business, loss of use) or any special or consequential loss or damage whatsoever.

4. This plan has been provided to you on the basis of the terms of use set out in the covering letter that accompanies this plan. If you do not accept and/or do not understand the terms of use set out in the covering letter you must not use the plan and must return it to the sender of the letter.

5. You are responsible for the security of the information provided to you. It must not be given, sold or made available upon payment of a fee to a third party.

N

W

E

S

IF IN DOUBT - ASK!

PHONE 0800 056 5866

EMERGENCY - If you damage a cable or line Phone 0800 783 8838 (24hrs) URGENTLY

UK Power Networks

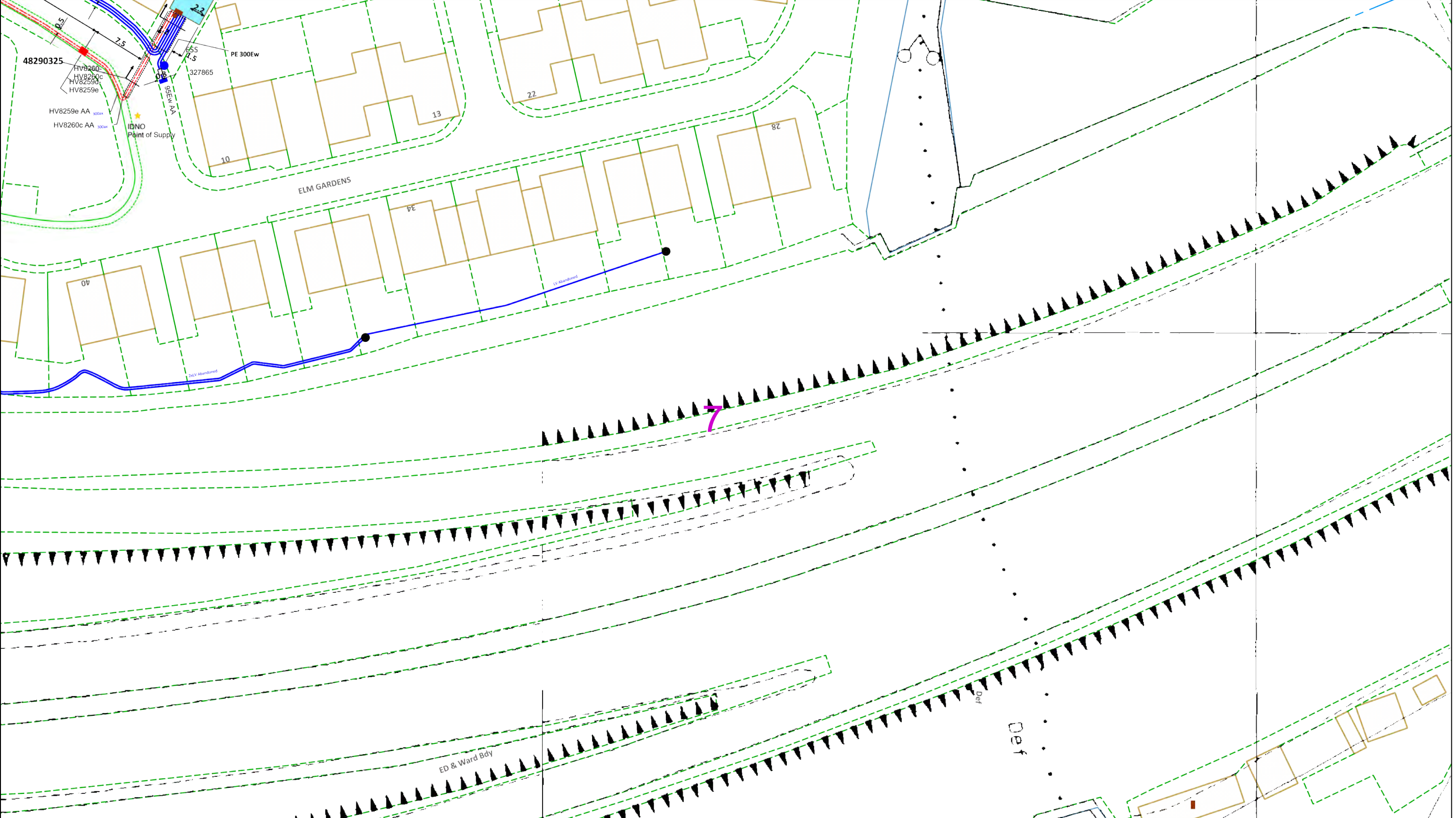
ALWAYS LOOK UP BEFORE YOU START WORK

Refer to HSE Guidance note GS6

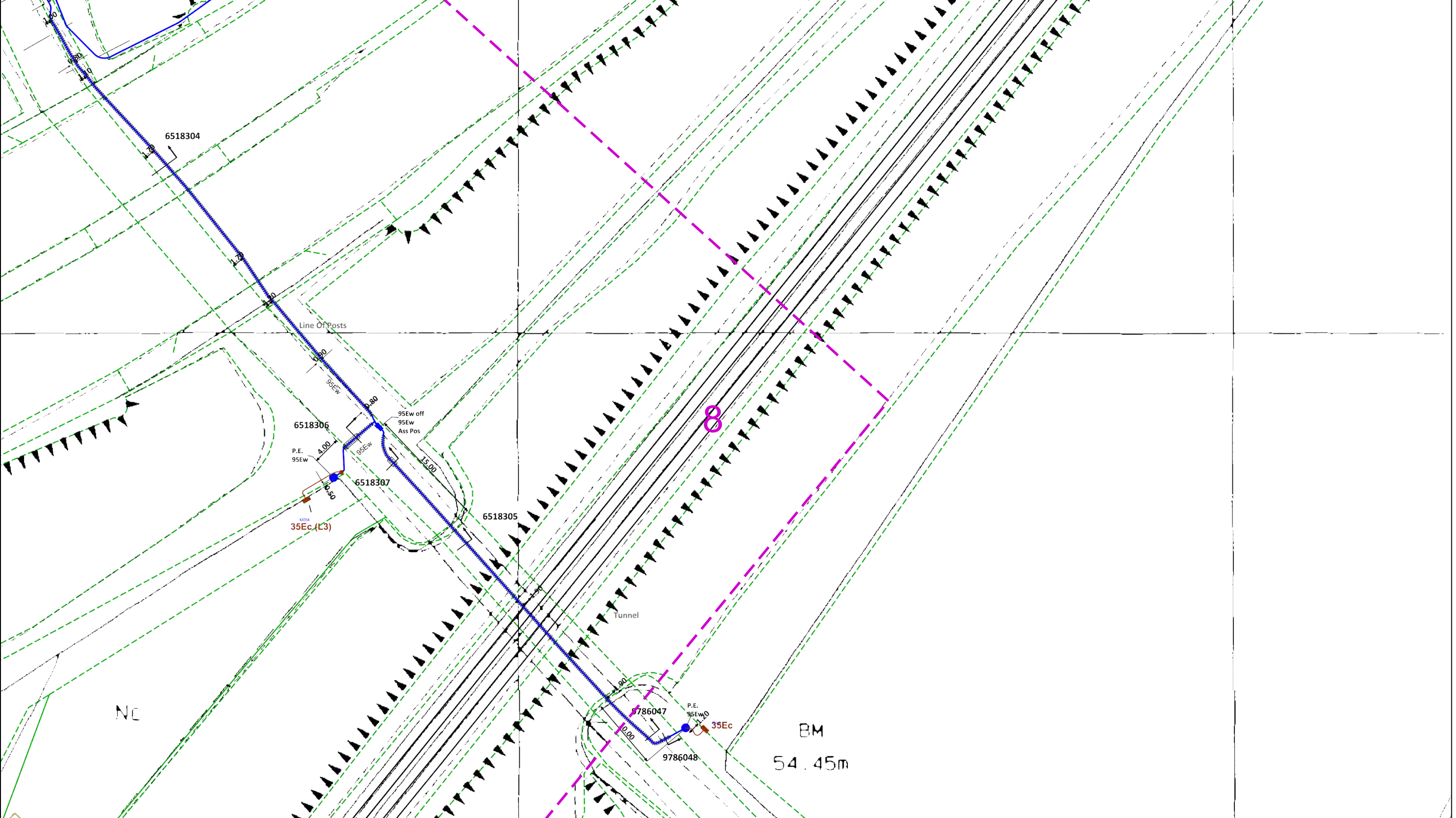
Maps produced at 1:2500 scale are Geo-Schematics which show LV mains cables and overhead lines (in some cases all voltages). Prior to carrying out excavations you must refer to the 1:500 records to determine the location of all known underground plant and equipment.

Reproduced by permission of Ordnance Survey on behalf of HMSO. © Crown copyright and database rights 2023. All rights reserved. Ordnance Survey Licence numbers 100019626, 100019826 and 100019450. Data has been added to the Ordnance Survey base map; all proprietary rights in such additional data are and shall remain the exclusive property of © London Power Networks plc or Eastern Power Networks plc or South Eastern Power Networks plc each being a distribution licensee under section 6(1)(c) of the Electricity Act 1989 for the relevant distribution services area as that term is defined in such licensee's distribution licence. All rights in such data reserved.

Plans generated by DigSAFE Pro™ software provided by LinesearchbeforeUdig.



<p>0 25 50 metres</p> <p>Dig Sites Area: Line:</p> <p>The quality and accuracy of any print will depend on your printer, your computer and its print settings. Measurements scaled from this plan may not match measurements between the same points on the ground.</p>		
<p>This plan must be used with the attached 'Symbols' document.</p> <p>Date Requested: 06/06/2023 Job Reference: 29723583 Site Location: 561893 196236 Requested by: Mrs Michelle Hawket Your Scheme/Reference: 332410839/100.004 - Shenfield East Scale: 1:500 (When plotted at A3)</p>	<ol style="list-style-type: none">1. The position of the apparatus shown on this drawing is believed to be correct but the original landmarks may have been altered since the apparatus was installed.2. The exact position of the apparatus should be verified - use approved cable avoidance tools prior to excavation using suitable hand tools.3. It is essential that trial holes are carefully made avoiding the use of mechanical tools or picks until the exact location of all the cables have been determined.4. It must be assumed that there is a service cable into each property, lamp column and street sign, etc.5. All cables must be treated as being live unless proved otherwise by UK Power Networks.6. The information proved must be given to all people working near UK Power Networks plant and equipment. Do not use plans more than 3 months after the issue date for excavation purposes.7. Please be aware that electric cables/lines belonging to other owners of licensed electricity distribution systems may be present and it is your responsibility to identify their location.	<p>IF IN DOUBT - ASK! PHONE 0800 056 5866 EMERGENCY - If you damage a cable or line Phone 0800 783 8838 (24hrs) URGENTLY</p> <p>ALWAYS LOOK UP BEFORE YOU START WORK Refer to HSE Guidance note GS6</p>
<p>Reproduced by permission of Ordnance Survey on behalf of HMSO. © Crown copyright and database rights 2023. All rights reserved. Ordnance Survey Licence numbers 100019626, 100019826 and 100019450. Data has been added to the Ordnance Survey base map; all proprietary rights in such additional data are and shall remain the exclusive property of © London Power Networks plc or Eastern Power Networks plc or South Eastern Power Networks plc each being a distribution licensee under section 6(1)(c) of the Electricity Act 1989 for the relevant distribution services area as that term is defined in such licensee's distribution licence. All rights in such data reserved.</p> <p>Plans generated by DigSAFE Pro™ software provided by LinesearchbeforeUdig.</p>		



0 25 50

metres

Dig Sites

Area: Line:

The quality and accuracy of any print will depend on your printer, your computer and its print settings. Measurements scaled from this plan may not match measurements between the same points on the ground.

This plan must be used with the attached 'Symbols' document.

Date Requested: 06/06/2023
Job Reference: 29723583
Site Location: 561893 196236
Requested by: Mrs Michelle Hawke
Your Scheme/Reference: 332410839/100.004 - Shenfield East
Scale: 1:500 (When plotted at A3)

1. The position of the apparatus shown on this drawing is believed to be correct but the original landmarks may have been altered since the apparatus was installed.
2. The exact position of the apparatus should be verified - use approved cable avoidance tools prior to excavation using suitable hand tools.
3. It is essential that trial holes are carefully made avoiding the use of mechanical tools or picks until the exact location of all the cables have been determined.
4. It must be assumed that there is a service cable into each property, lamp column and street sign, etc.
5. All cables must be treated as being live unless proved otherwise by UK Power Networks.
6. The information proved must be given to all people working near UK Power Networks plant and equipment. Do not use plans more than 3 months after the issue date for excavation purposes.
7. Please be aware that electric cables/lines belonging to other owners of licensed electricity distribution systems may be present and it is your responsibility to identify their location.

1. UK Power Networks does not warrant that the information provided to you is correct. You rely upon it at your own risk.
2. UK Power Networks does not exclude or limit its liability if it causes the death of any persons or causes personal injury to a person.
3. Subject to paragraph 2 UK Power Networks has no liability to you in contract, in tort (including negligence), for breach of statutory duty or otherwise for any loss, damage, cost, claims, demands, or expenses that you or any third party may suffer or incur as a result of using the information provided whether for physical damage to property or for any economic loss (including without limitation loss of profit, loss of opportunity, loss of savings, loss of goodwill, loss of business, loss of use) or any special or consequential loss or damage whatsoever.
4. This plan has been provided to you on the basis of the terms of use set out in the covering letter that accompanies this plan. If you do not accept and/or do not understand the terms of use set out in the covering letter you must not use the plan and must return it to the sender of the letter.
5. You are responsible for the security of the information provided to you. It must not be given, sold or made available upon payment of a fee to a third party.

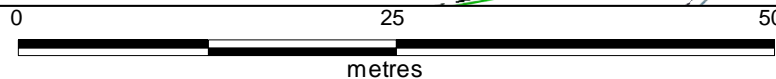
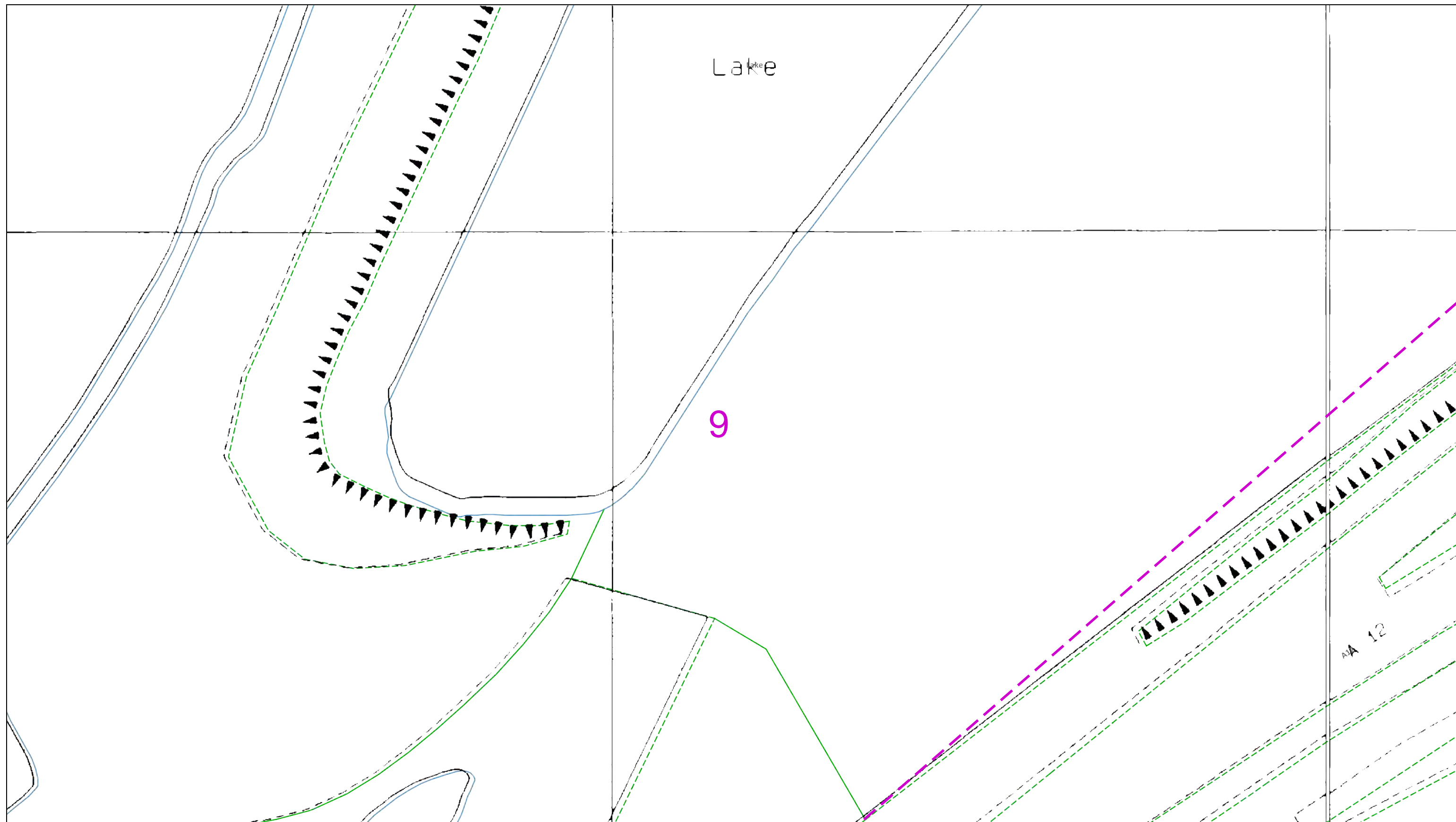
IF IN DOUBT - ASK!
PHONE 0800 056 5866
EMERGENCY - If you damage a cable or line
Phone 0800 783 8838 (24hrs) URGENTLY

ALWAYS LOOK UP BEFORE YOU START WORK
Refer to HSE Guidance note GS6

Maps produced at 1:2500 scale are Geo-Schematics which show LV mains cables and overhead lines (in some cases all voltages). Prior to carrying out excavations you must refer to the 1:500 records to determine the location of all known underground plant and equipment.

Reproduced by permission of Ordnance Survey on behalf of HMSO. © Crown copyright and database rights 2023. All rights reserved. Ordnance Survey Licence numbers 100019626, 100019826 and 100019450. Data has been added to the Ordnance Survey base map; all proprietary rights in such additional data are and shall remain the exclusive property of © London Power Networks plc or Eastern Power Networks plc or South Eastern Power Networks plc each being a distribution licensee under section 6(1)(c) of the Electricity Act 1989 for the relevant distribution services area as that term is defined in such licensee's distribution licence. All rights in such data reserved.

Plans generated by DigSAFE Pro™ software provided by LinesearchbeforeUdig.



Dig Sites Area: Line:

The quality and accuracy of any print will depend on your printer, your computer and its print settings. Measurements scaled from this plan may not match measurements between the same points on the ground.

This plan must be used with
the attached 'Symbols'
document.

Date Requested: 06/06/2023
Job Reference: 29723583
Site Location: 561893 196236
Requested by:
Mrs Michelle Hawkett
Your Scheme/Reference:
332410839/100.004 - Shenfield East
Scale: 1:500 (When plotted at A3)

1. The position of the apparatus shown on this drawing is believed to be correct but the original landmarks may have been altered since the apparatus was installed.
2. The exact position of the apparatus should be verified - use approved cable avoidance tools prior to excavation using suitable hand tools.
3. It is essential that trial holes are carefully made avoiding the use of mechanical tools or picks until the exact location of all the cables have been determined.
4. It must be assumed that there is a service cable into each property, lamp column and street sign, etc.
5. All cables must be treated as being live unless proved otherwise by UK Power Networks.
6. The information proved must be given to all people working near UK Power Networks plant and equipment. Do not use plans more than 3 months after the issue date for excavation purposes.
7. Please be aware that electric cables/lines belonging to other owners of licensed electricity distribution systems may be present and it is your responsibility to identify their location.

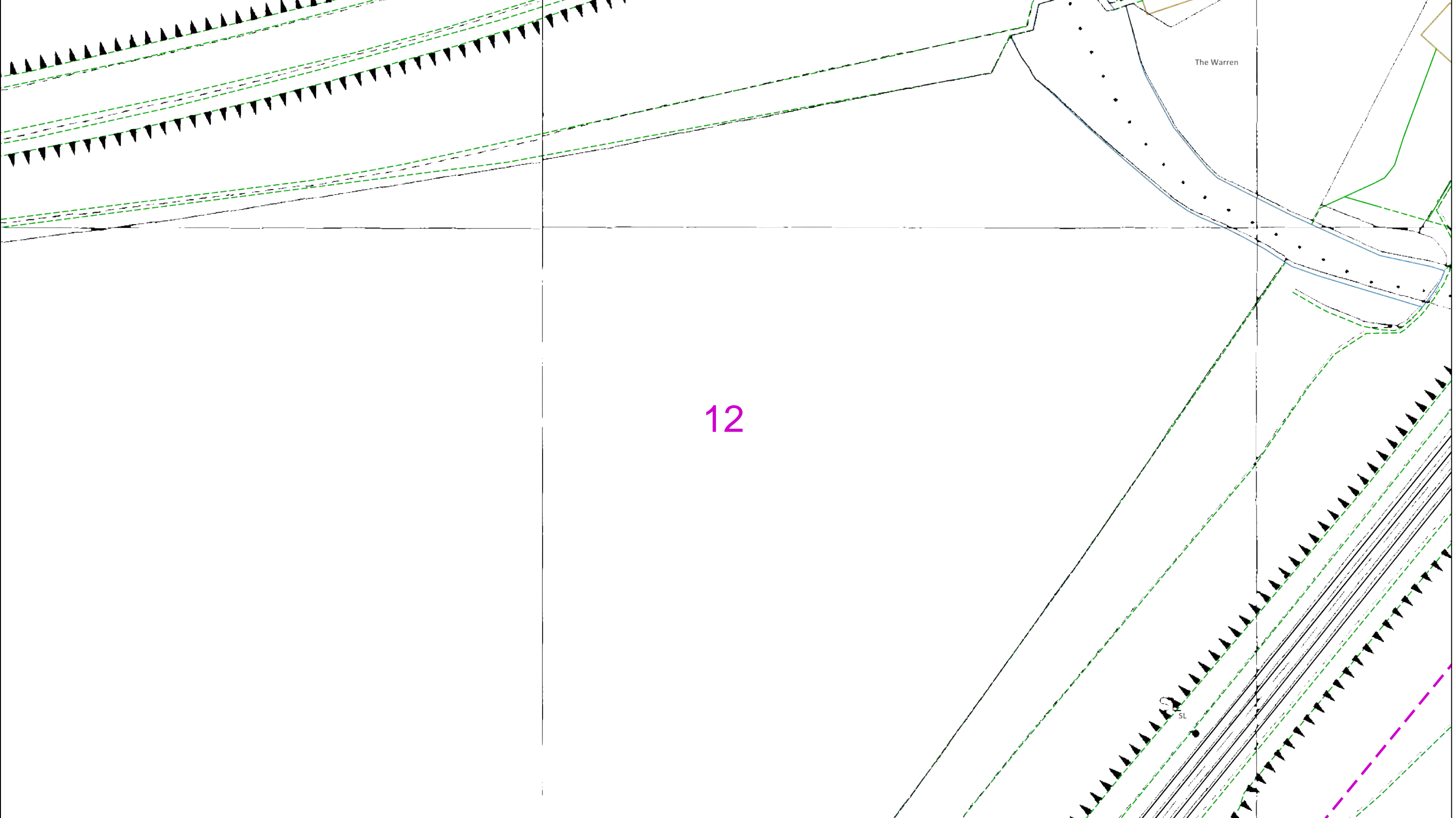
1. UK Power Networks does not warrant that the information provided to you is correct. You rely upon it at your own risk.
2. UK Power Networks does not exclude or limit its liability if it causes the death of any persons or causes personal injury to a person.
3. Subject to paragraph 2 UK Power Networks has no liability to you in contract, in tort (including negligence), for breach of statutory duty or otherwise for any loss, damage, cost, claims, demands, or expenses that you or any third party may suffer or incur as a result of using the information provided whether for physical damage to property or for any economic loss (including without limitation loss of profit, loss of opportunity, loss of savings, loss of goodwill, loss of business, loss of use) or any special or consequential loss or damage whatsoever.
4. This plan has been provided to you on the basis of the terms of use set out in the covering letter that accompanies this plan. If you do not accept and/or do not understand the terms of use set out in the covering letter you must not use the plan and must return it to the sender of the letter.
5. You are responsible for the security of the information provided to you. It must not be given, sold or made available upon payment of a fee to a third party.



ALWAYS LOOK UP
BEFORE
YOU START WORK
Refer to HSE
Guidance note GS6

IF IN DOUBT - ASK!
PHONE 0800 056 5866
EMERGENCY - If you
damage a cable or line
Phone 0800 783 8838
(24hrs) URGENTLY

Maps produced at 1:2500 scale are Geo-Schematics which show LV mains cables and overhead lines (in some cases all voltages). Prior to carrying out excavations you must refer to the 1:500 records to determine the location of all known underground plant and equipment.



12



0

25

50

metres

Dig Sites

Area:  Line: 

This plan must be used with the attached 'Symbols' document.

Date Requested: 06/06/2023

Job Reference: 29723583

Site Location: 561893 196236

Requested by: Mrs Michelle Hawket

Your Scheme/Reference: 332410839/100.004 - Shenfield East

Scale: 1:500 (When plotted at A3)

1. The position of the apparatus shown on this drawing is believed to be correct but the original landmarks may have been altered since the apparatus was installed.

2. The exact position of the apparatus should be verified - use approved cable avoidance tools prior to excavation using suitable hand tools.

3. It is essential that trial holes are carefully made avoiding the use of mechanical tools or picks until the exact location of all the cables have been determined.

4. It must be assumed that there is a service cable into each property, lamp column and street sign, etc.

5. All cables must be treated as being live unless proved otherwise by UK Power Networks.

6. The information proved must be given to all people working near UK Power Networks plant and equipment. Do not use plans more than 3 months after the issue date for excavation purposes.

7. Please be aware that electric cables/lines belonging to other owners of licensed electricity distribution systems may be present and it is your responsibility to identify their location.


1. UK Power Networks does not warrant that the information provided to you is correct. You rely upon it at your own risk.


2. UK Power Networks does not exclude or limit its liability if it causes the death of any persons or causes personal injury to a person.

3. Subject to paragraph 2 UK Power Networks has no liability to you in contract, in tort (including negligence), for breach of statutory duty or otherwise for any loss, damage, cost, claims, demands, or expenses that you or any third party may suffer or incur as a result of using the information provided whether for physical damage to property or for any economic loss (including without limitation loss of profit, loss of opportunity, loss of savings, loss of goodwill, loss of business, loss of use) or any special or consequential loss or damage whatsoever.

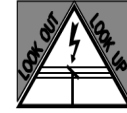
4. This plan has been provided to you on the basis of the terms of use set out in the covering letter that accompanies this plan. If you do not accept and/or do not understand the terms of use set out in the covering letter you must not use the plan and must return it to the sender of the letter.

5. You are responsible for the security of the information provided to you. It must not be given, sold or made available upon payment of a fee to a third party.





IF IN DOUBT - ASK!
PHONE 0800 056 5866
EMERGENCY - If you damage a cable or line
Phone 0800 783 8838
(24hrs) URGENTLY

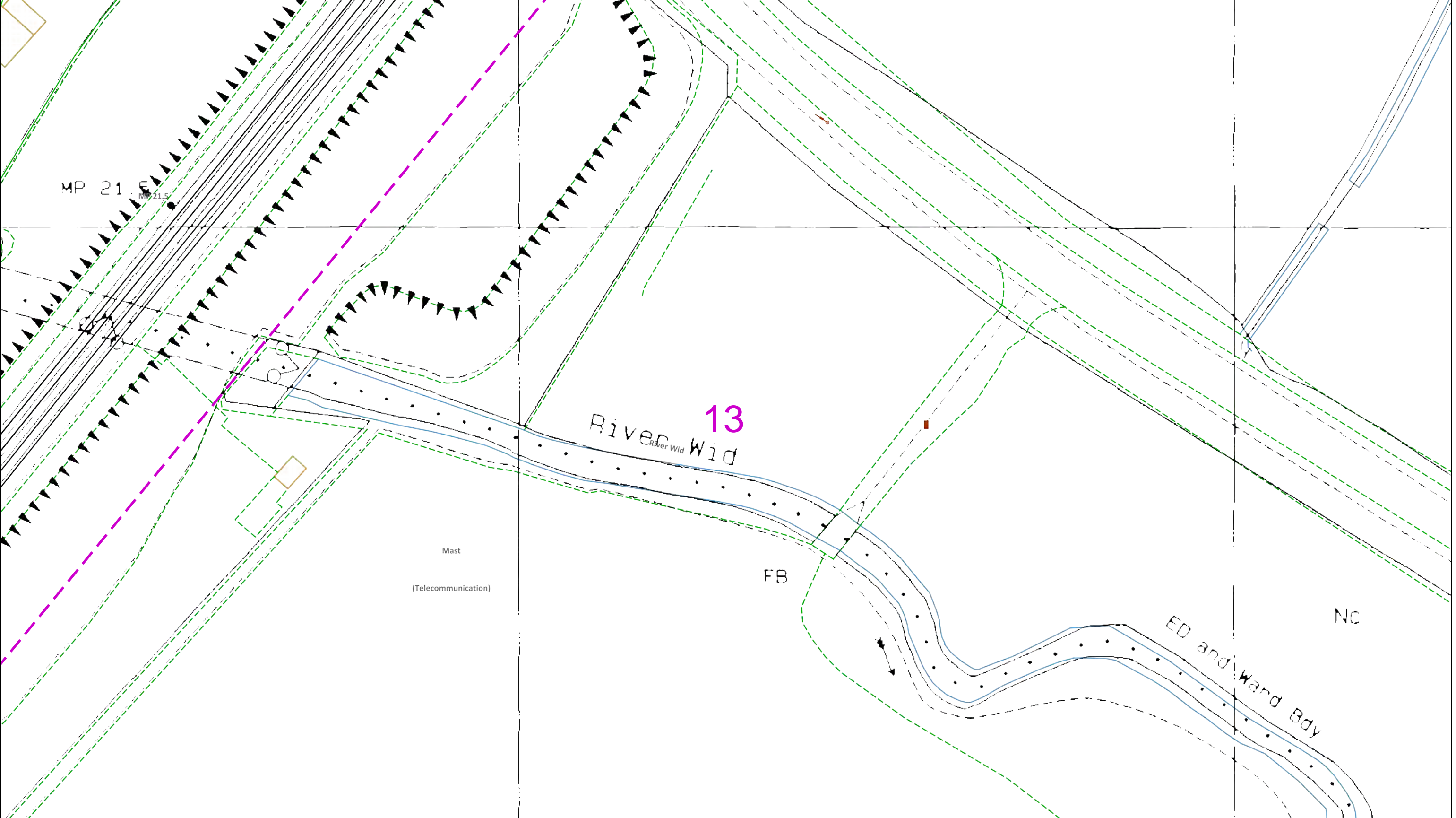



ALWAYS LOOK UP BEFORE YOU START WORK
Refer to HSE Guidance note GS6

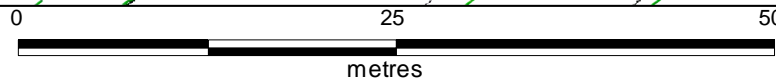
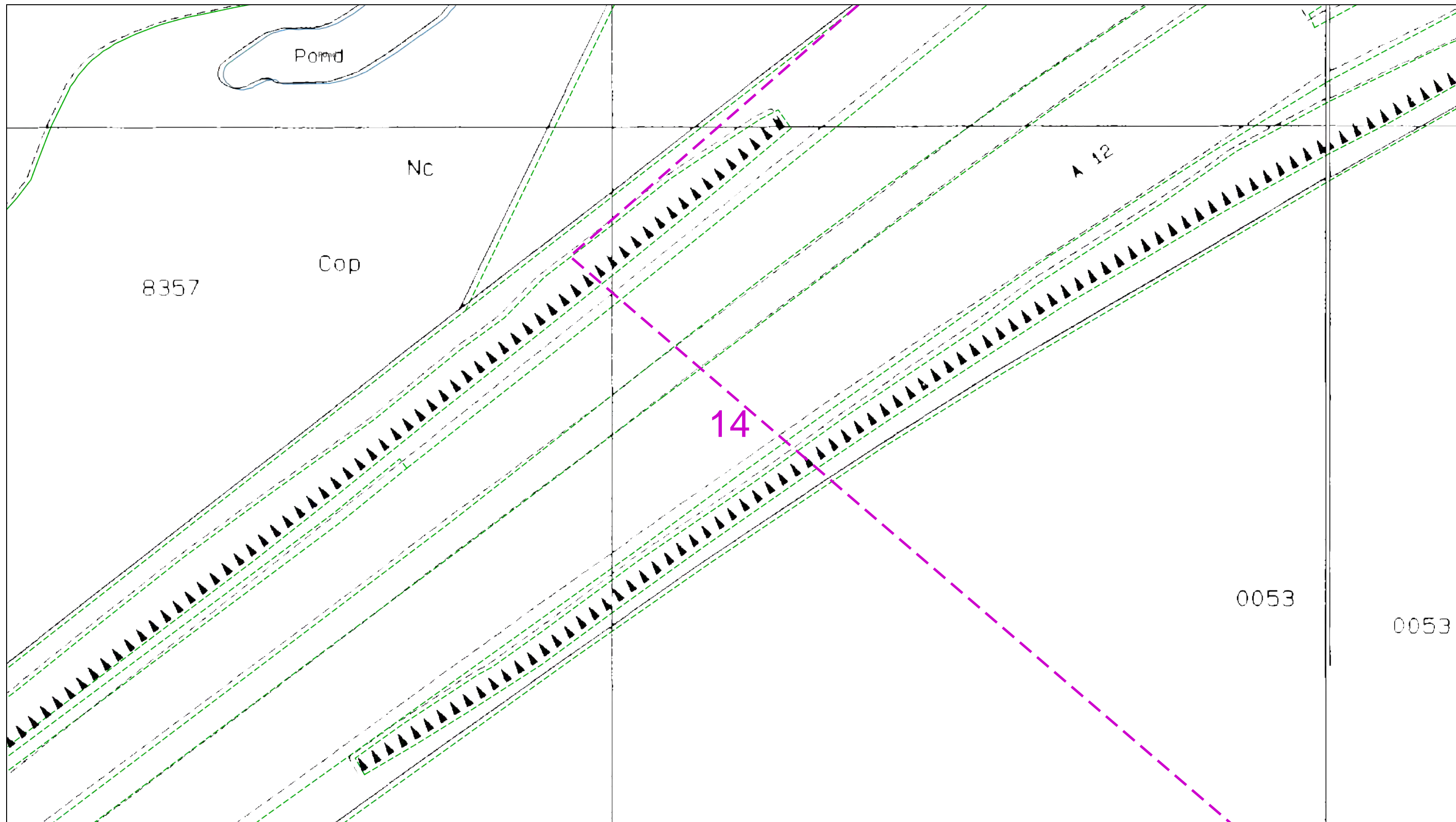
Maps produced at 1:2500 scale are Geo-Schematics which show LV mains cables and overhead lines (in some cases all voltages). Prior to carrying out excavations you must refer to the 1:500 records to determine the location of all known underground plant and equipment.

Reproduced by permission of Ordnance Survey on behalf of HMSO. © Crown copyright and database rights 2023. All rights reserved. Ordnance Survey Licence numbers 100019626, 100019826 and 100019450. Data has been added to the Ordnance Survey base map; all proprietary rights in such additional data are and shall remain the exclusive property of © London Power Networks plc or Eastern Power Networks plc or South Eastern Power Networks plc each being a distribution licensee under section 6(1)(c) of the Electricity Act 1989 for the relevant distribution services area as that term is defined in such licensee's distribution licence. All rights in such data reserved.

Plans generated by DigSAFE Pro™ software provided by LinesearchbeforeUdig.



<p>0 25 50 metres</p> <p>Dig Sites Area: ---- Line: ----</p> <p>The quality and accuracy of any print will depend on your printer, your computer and its print settings. Measurements scaled from this plan may not match measurements between the same points on the ground.</p>				
<p>This plan must be used with the attached 'Symbols' document.</p> <p>Date Requested: 06/06/2023 Job Reference: 29723583 Site Location: 561893 196236 Requested by: Mrs Michelle Hawket Your Scheme/Reference: 332410839/100.004 - Shenfield East Scale: 1:500 (When plotted at A3)</p>		<p>1. The position of the apparatus shown on this drawing is believed to be correct but the original landmarks may have been altered since the apparatus was installed. 2. The exact position of the apparatus should be verified - use approved cable avoidance tools prior to excavation using suitable hand tools. 3. It is essential that trial holes are carefully made avoiding the use of mechanical tools or picks until the exact location of all the cables have been determined. 4. It must be assumed that there is a service cable into each property, lamp column and street sign, etc. 5. All cables must be treated as being live unless proved otherwise by UK Power Networks. 6. The information proved must be given to all people working near UK Power Networks plant and equipment. Do not use plans more than 3 months after the issue date for excavation purposes. 7. Please be aware that electric cables/lines belonging to other owners of licensed electricity distribution systems may be present and it is your responsibility to identify their location.</p>		<p>1. UK Power Networks does not warrant that the information provided to you is correct. You rely upon it at your own risk. 2. UK Power Networks does not exclude or limit its liability if it causes the death of any persons or causes personal injury to a person. 3. Subject to paragraph 2 UK Power Networks has no liability to you in contract, in tort (including negligence), for breach of statutory duty or otherwise for any loss, damage, cost, claims, demands, or expenses that you or any third party may suffer or incur as a result of using the information provided whether for physical damage to property or for any economic loss (including without limitation loss of profit, loss of opportunity, loss of savings, loss of goodwill, loss of business, loss of use) or any special or consequential loss or damage whatsoever. 4. This plan has been provided to you on the basis of the terms of use set out in the covering letter that accompanies this plan. If you do not accept and/or do not understand the terms of use set out in the covering letter you must not use the plan and must return it to the sender of the letter. 5. You are responsible for the security of the information provided to you. It must not be given, sold or made available upon payment of a fee to a third party.</p>
		<p>IF IN DOUBT - ASK! PHONE 0800 056 5866 EMERGENCY - If you damage a cable or line Phone 0800 783 8838 (24hrs) URGENTLY</p>	<p>ALWAYS LOOK UP BEFORE YOU START WORK Refer to HSE Guidance note GS6</p>	
<p>Maps produced at 1:2500 scale are Geo-Schematics which show LV mains cables and overhead lines (in some cases all voltages). Prior to carrying out excavations you must refer to the 1:500 records to determine the location of all known underground plant and equipment.</p>				
<p>Reproduced by permission of Ordnance Survey on behalf of HMSO. © Crown copyright and database rights 2023. All rights reserved. Ordnance Survey Licence numbers 100019626, 100019826 and 100019450. Data has been added to the Ordnance Survey base map; all proprietary rights in such additional data are and shall remain the exclusive property of © London Power Networks plc or Eastern Power Networks plc or South Eastern Power Networks plc each being a distribution licensee under section 6(1)(c) of the Electricity Act 1989 for the relevant distribution services area as that term is defined in such licensee's distribution licence. All rights in such data reserved.</p> <p>Plans generated by DigSAFE Pro™ software provided by LinesearchbeforeUdig.</p>				



Dig Sites Area: Line:

The quality and accuracy of any print will depend on your printer, your computer and its print settings. Measurements scaled from this plan may not match measurements between the same points on the ground.

This plan must be used with
the attached 'Symbols'
document.

Date Requested: 06/06/2023
Job Reference: 29723583
Site Location: 561893 196236
Requested by:
Mrs Michelle Hawkett
Your Scheme/Reference:
332410839/100.004 - Shenfield East
Scale: 1:500 (When plotted at A3)

1. The position of the apparatus shown on this drawing is believed to be correct but the original landmarks may have been altered since the apparatus was installed.
2. The exact position of the apparatus should be verified - use approved cable avoidance tools prior to excavation using suitable hand tools.
3. It is essential that trial holes are carefully made avoiding the use of mechanical tools or picks until the exact location of all the cables have been determined.
4. It must be assumed that there is a service cable into each property, lamp column and street sign, etc.
5. All cables must be treated as being live unless proved otherwise by UK Power Networks.
6. The information proved must be given to all people working near UK Power Networks plant and equipment. Do not use plans more than 3 months after the issue date for excavation purposes.
7. Please be aware that electric cables/lines belonging to other owners of licensed electricity distribution systems may be present and it is your responsibility to identify their location.

1. UK Power Networks does not warrant that the information provided to you is correct. You rely upon it at your own risk.
2. UK Power Networks does not exclude or limit its liability if it causes the death of any persons or causes personal injury to a person.
3. Subject to paragraph 2 UK Power Networks has no liability to you in contract, in tort (including negligence), for breach of statutory duty or otherwise for any loss, damage, cost, claims, demands, or expenses that you or any third party may suffer or incur as a result of using the information provided whether for physical damage to property or for any economic loss (including without limitation loss of profit, loss of opportunity, loss of savings, loss of goodwill, loss of business, loss of use) or any special or consequential loss or damage whatsoever.
4. This plan has been provided to you on the basis of the terms of use set out in the covering letter that accompanies this plan. If you do not accept and/or do not understand the terms of use set out in the covering letter you must not use the plan and must return it to the sender of the letter.
5. You are responsible for the security of the information provided to you. It must not be given, sold or made available upon payment of a fee to a third party.



IF IN DOUBT - ASK!
PHONE 0800 056 5866
EMERGENCY - If you
damage a cable or line
Phone 0800 783 8838
(24hrs) URGENTLY



ALWAYS LOOK UP
BEFORE
YOU START WORK
Refer to HSE
Guidance note GS6

Maps produced at 1:2500 scale are Geo-Schematics which show LV mains cables and overhead lines (in some cases all voltages). Prior to carrying out excavations you must refer to the 1:500 records to determine the location of all known underground plant and equipment.