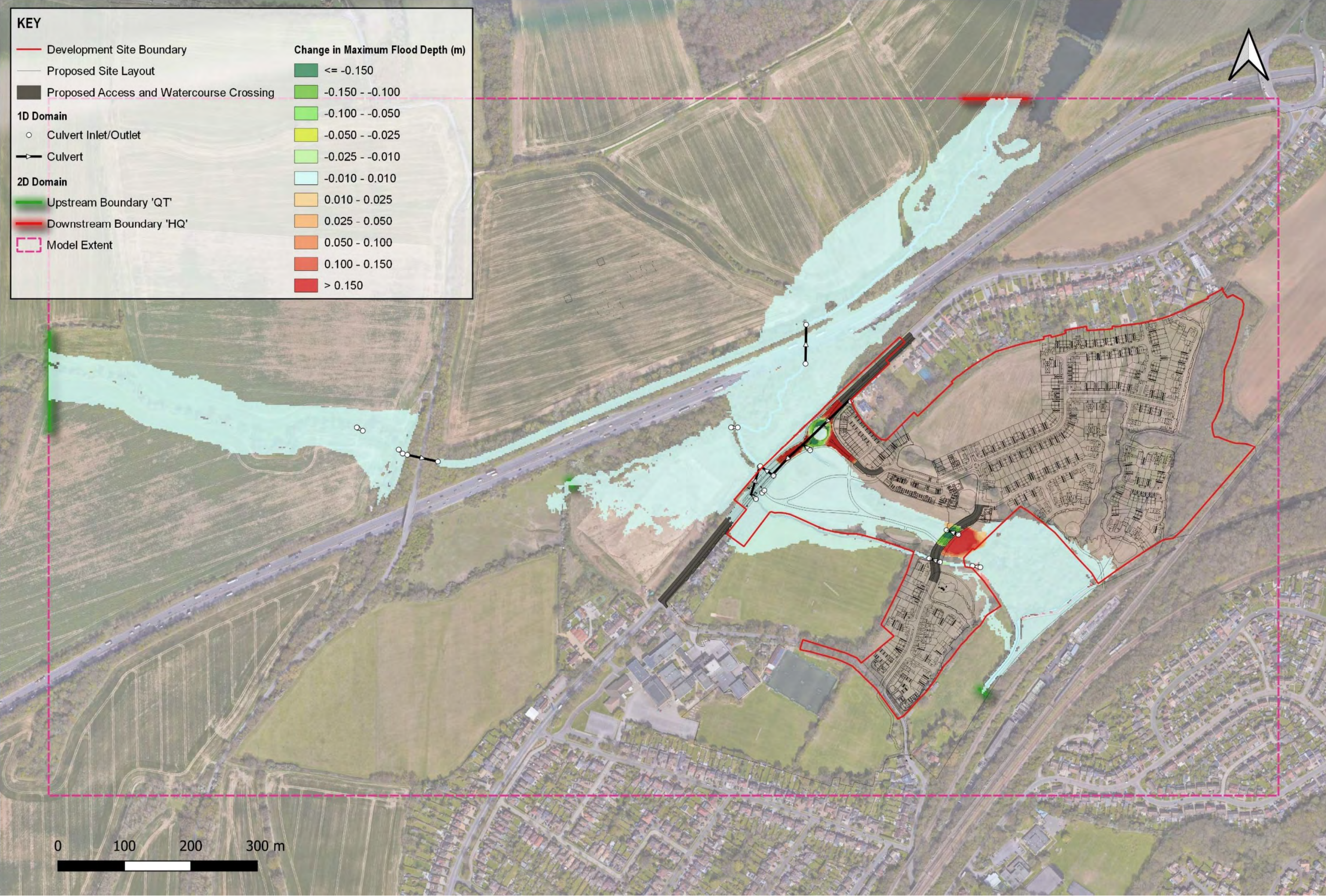
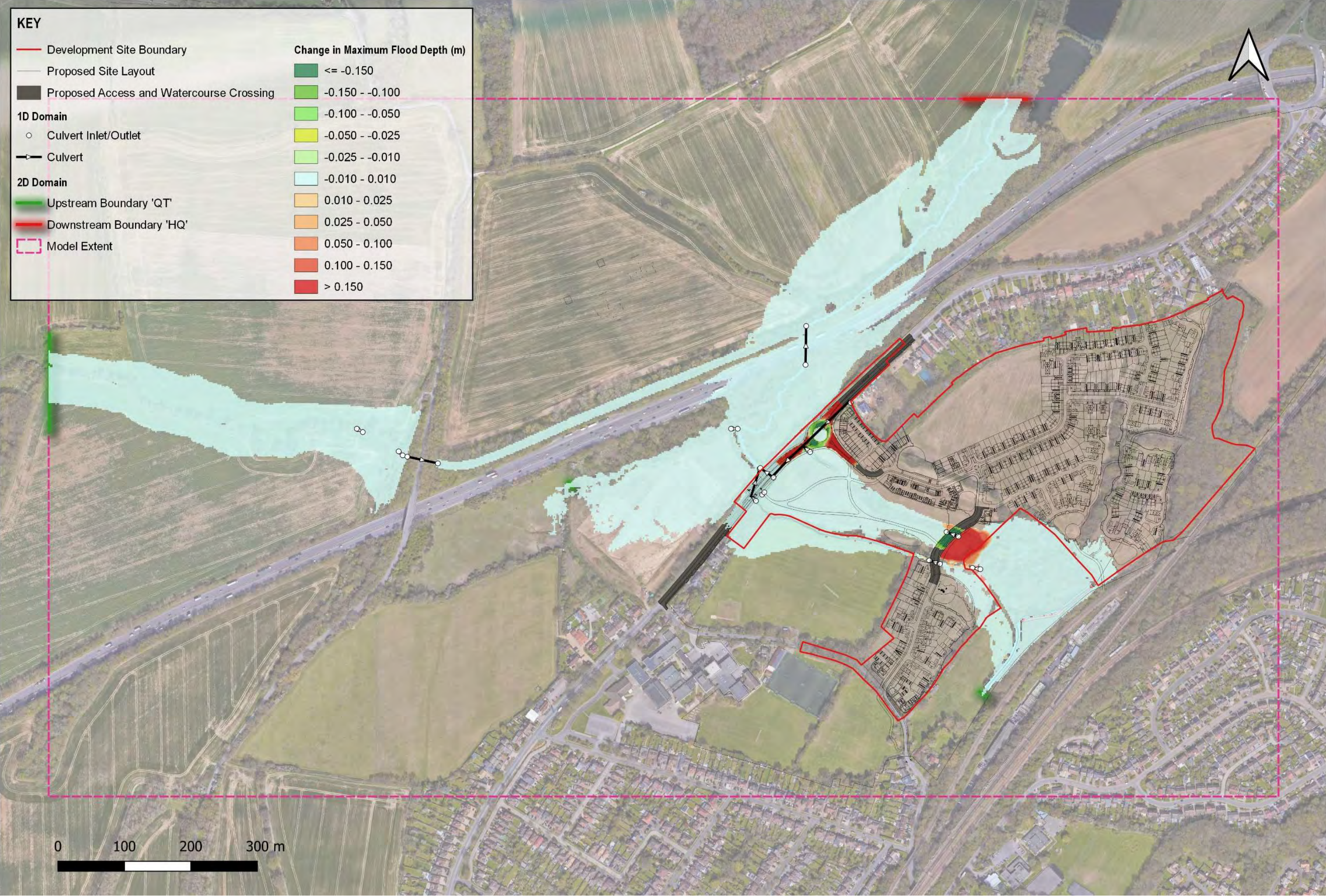


Map 47: Post Development Scenario - Conservative Upstream Boundary Condition. Changes in Maximum Flood Depths (6.5hr 3.3% AEP)



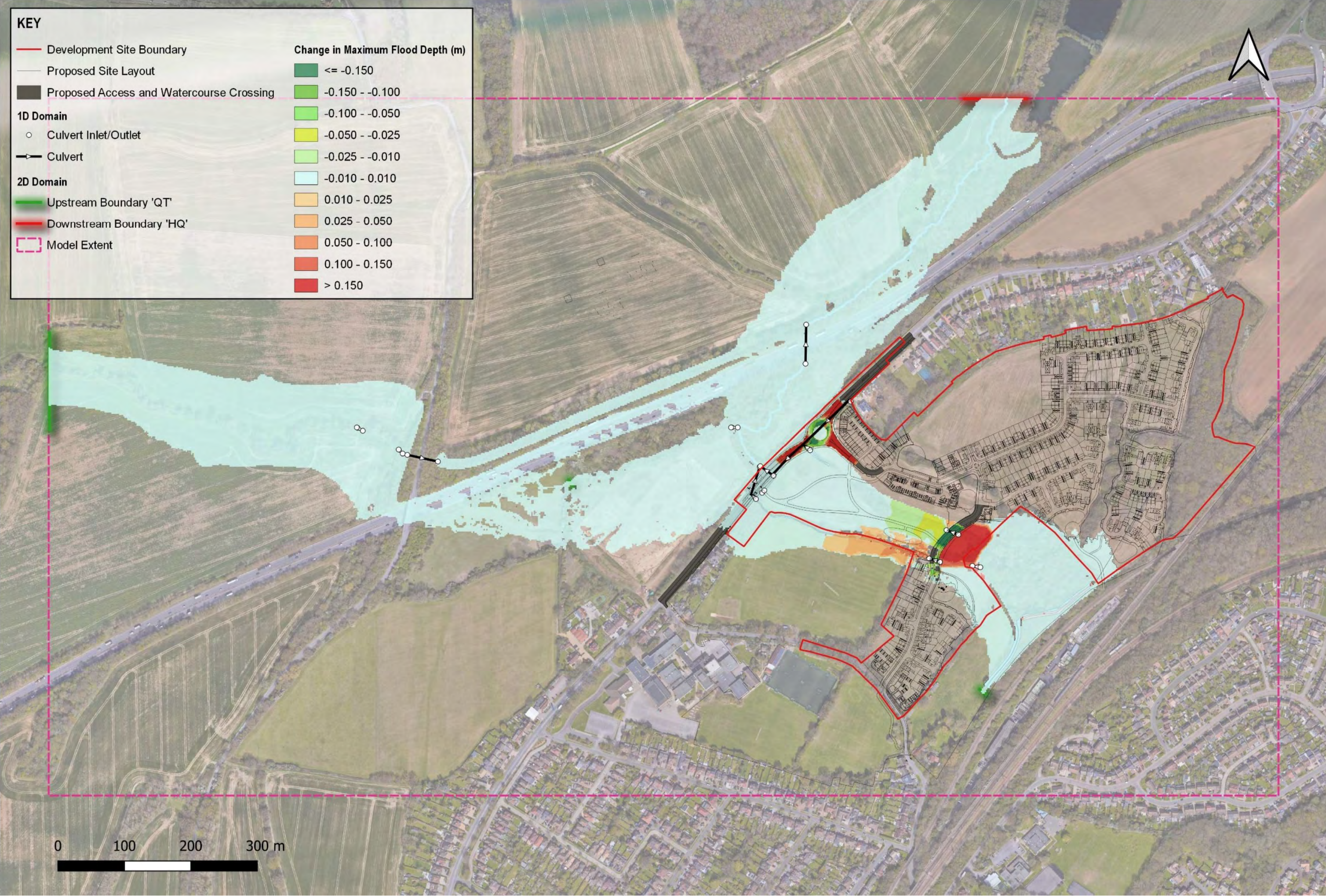


Map 48: Post Development Scenario - Conservative Upstream Boundary Condition. Changes in Maximum Flood Depths (6.5hr 1.0% AEP)





Map 49: Post Development Scenario - Conservative Upstream Boundary Condition. Changes in Maximum Flood Depths (6.5hr 0.1% AEP)







# JNP GROUP

## CONSULTING ENGINEERS

**Brighouse**

Woodvale House  
Woodvale Road  
Brighouse  
West Yorkshire  
HD6 4AB

**telephone**

01484 400691

**email**

[brighouse@jnpgroup.co.uk](mailto:brighouse@jnpgroup.co.uk)

**Chesham (HQ)**

Link House  
St Mary's Way  
Chesham  
Buckinghamshire  
HP5 1HR

**telephone**

01494 771221

**email**

[chesham@jnpgroup.co.uk](mailto:chesham@jnpgroup.co.uk)

**Glasgow**

Oxford House  
71 Oxford Street  
Glasgow  
G59 5EP

**telephone**

0141 378 0808

**email**

[glasgow@jnpgroup.co.uk](mailto:glasgow@jnpgroup.co.uk)

**Hartlepool**

The Innovation Centre  
Venture Court  
Queens Meadow Business Park  
Hartlepool  
TS25 5TG

**telephone**

01429 239539

**email**

[hartlepool@jnpgroup.co.uk](mailto:hartlepool@jnpgroup.co.uk)

**Leamington Spa**

Marlborough House  
48 Holly Walk  
Leamington Spa  
Warwickshire  
CV32 4XP

**telephone**

01926 889955

**email**

[leamingtonspa@jnpgroup.co.uk](mailto:leamingtonspa@jnpgroup.co.uk)

**Sheffield**

MBP2 Meadowhall Business Park  
Carbrook Hall Road  
Sheffield  
South Yorkshire  
S9 2EQ

**telephone**

0114 244 3500

**email**

[sheffield@jnpgroup.co.uk](mailto:sheffield@jnpgroup.co.uk)