

Officers' Meadow, Shenfield

Community webinar

July 2023

croudacehomes

Meet the team

Ben Yallop – Croudace Homes

Jane Piper – Stantec

Mike McCullough – SLR Consulting

Rodrigo Magno – JNP Group Consulting

Grace Weiner – Meeting Place

croudacehomes



About Croudace

Founded in 1946, we remain a family-owned business. We are a residential developer providing a wide range of high-quality homes in desirable locations throughout the southeast.

Ranging from affordable starter homes and apartments through to luxury 6-bedroom family homes, we can offer something for all stages of life.



Site location

The site is allocated on land north of Shenfield School.

It is allocated in Brentwood Borough Council's Local Plan under policy R03.

Croudace is bringing forward part of the site, with separate applications being prepared by Redrow, Countryside and Stonebond for the wider site.

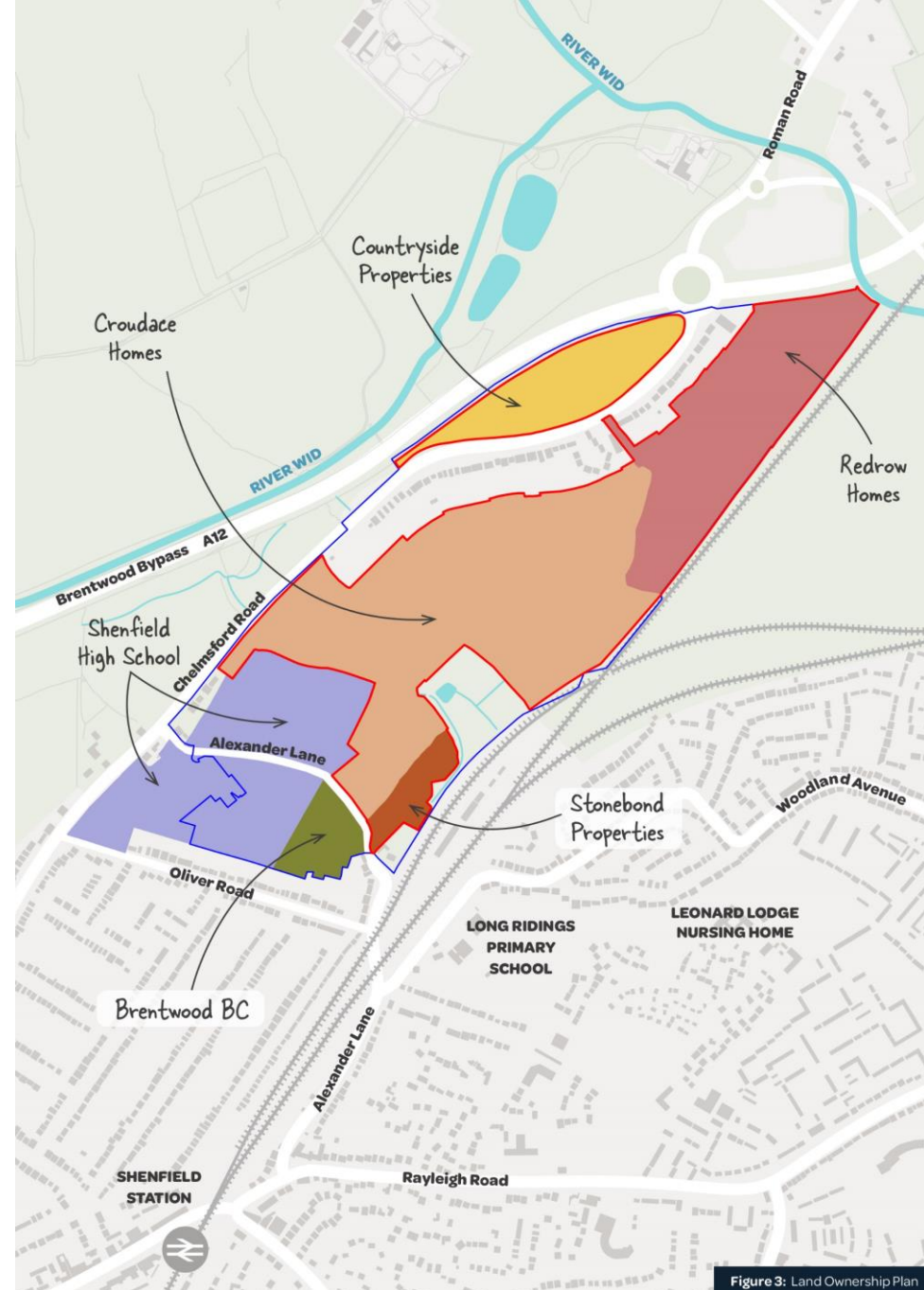


Figure 3: Land Ownership Plan

Proposals



348 high-quality new homes



Provision for new cycle ways and connections



Play areas



Significant public open space for all to enjoy



122 (35%) affordable homes including rent and shared ownership

Illustrative Masterplan



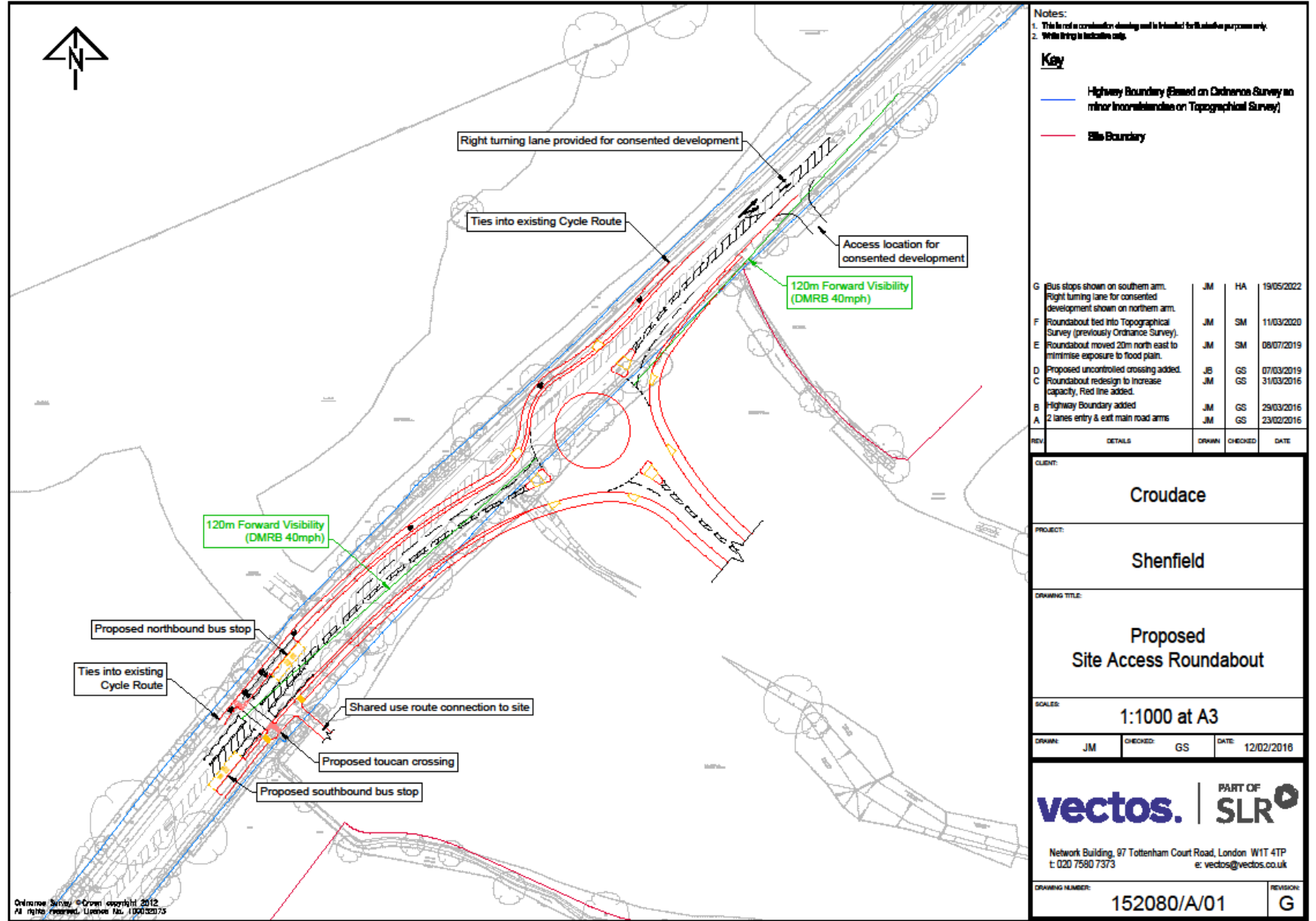


Illustrative house designs

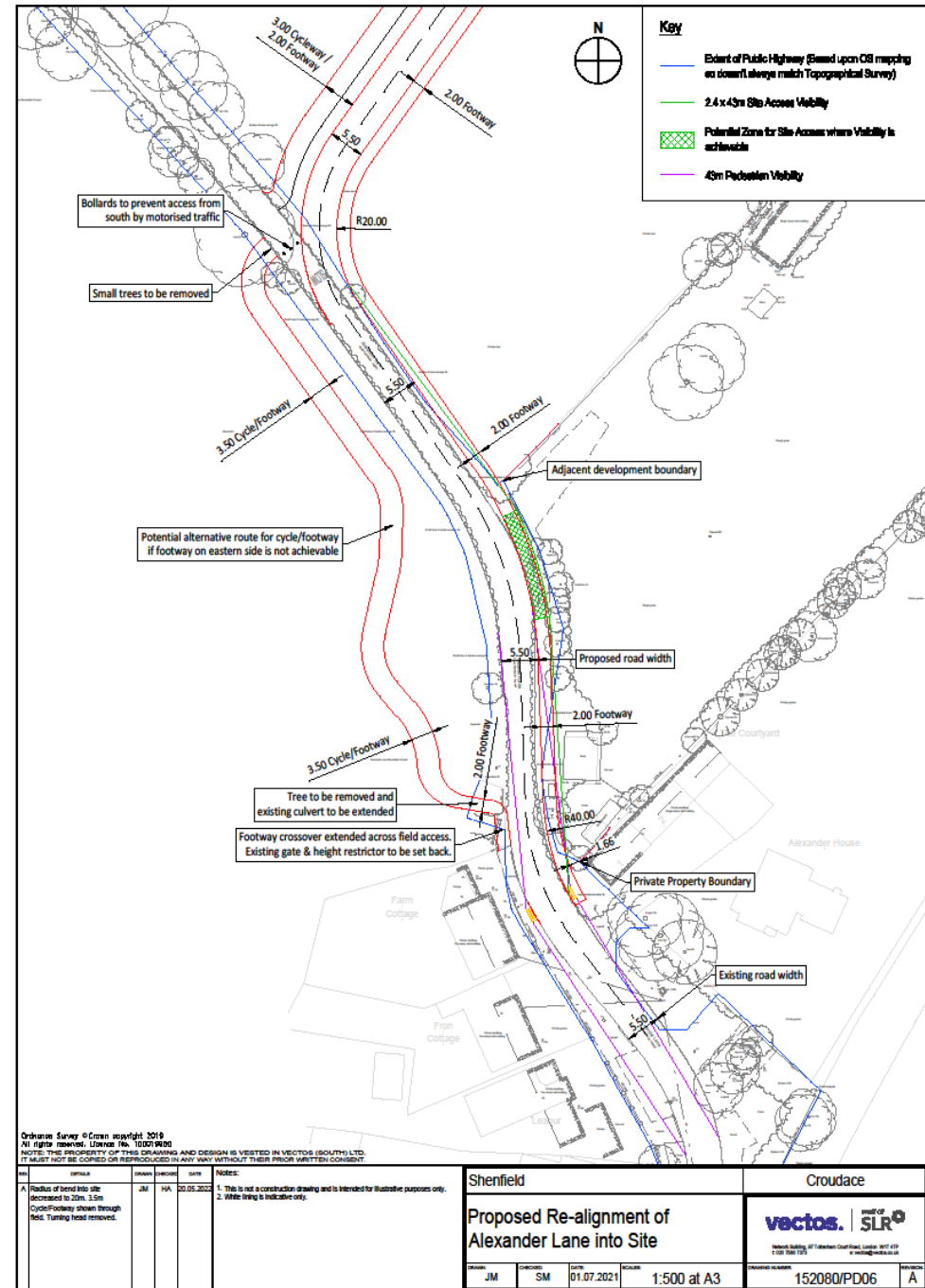


Illustrative house designs

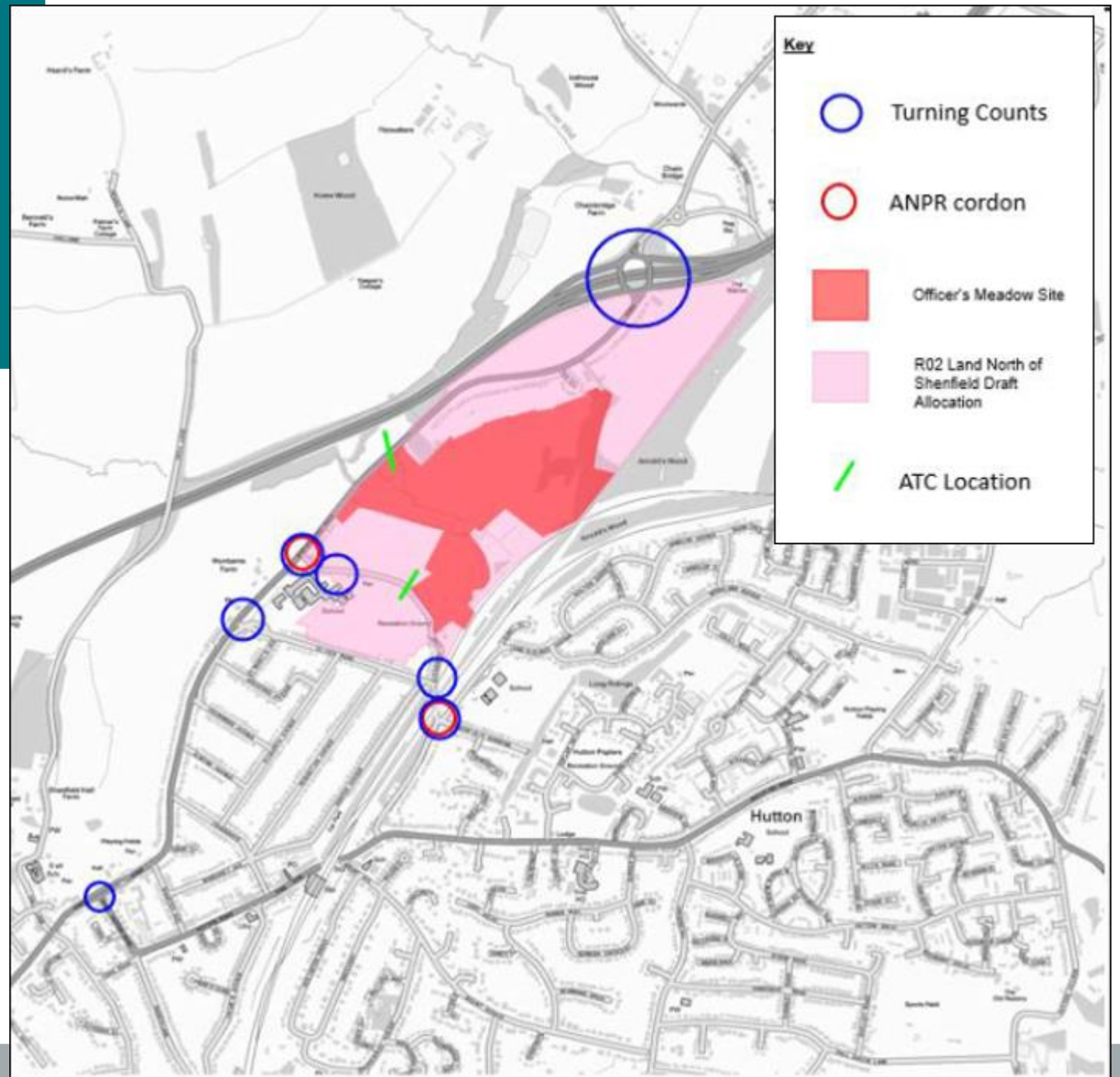
Proposed site access



Alexander Lane



Transport survey locations



Next steps

July 2023 - Consultation launch

11th July 2023 – Webinar presentation

Summer 2023 – Submission of
planning application

Winter 2023 – Anticipated
determination by Brentwood Borough
Council



Illustrative house designs

Q+A

Contact:
info@landnorthofshenfield.co.uk

croudacehomes